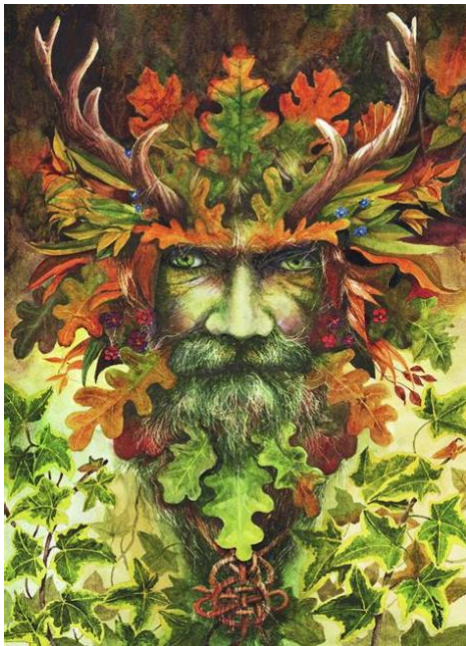


The Green Man

The Green Man is a legendary being and a symbol of death and rebirth. The figure represents the cycle of growth that happens every spring.

The figure is shown in many different ways. Branches and vines may sprout from the mouth, nose, or other parts of the face. Some variations show branches growing with flowers and fruits, or a leafy beard. There are three main common types:

- The Foliate Head – completely covered in green leaves
- The Disgorging Head – spews vegetation from its mouth
- The Bloodsucker Head – sprouts vegetation from tear ducts, nostrils, mouth and ears



Green Men are often found in carvings on both religious and non-religious buildings. He can be called many different names, such as the Green Knight, Jack in the Green, and John Barleycorn.

Famous figures are said to have been inspired by The Green Man, such as Peter Pan, Treebeard from The Lord of the Rings, and the Jolly Green Giant!

